



SonicWall TZ Series (Gen 7)

Integrated SD-Branch platform for next-gen SMBs & branches

The latest SonicWall TZ series, are the first desktop form factor next-generation firewalls (NGFW) with 10 or 5 Gigabit Ethernet interfaces. The series consist of a wide range of products to suit a variety of use cases.

Designed for small, mid-sized organizations and distributed enterprise with SD-Branch locations, the 7th generation (Gen 7) TZ series delivers industry-validated security effectiveness with best-in-class price-performance. These NGFWs address the growing trends in web encryption, connected devices and high-speed mobility by delivering a solution that meets the need for automated, real-time breach detection and prevention.

HIGHLIGHTS

- 10/5/2.5/1 GbE interfaces in a desktop form factor
- SD-Branch ready
- Secure SD-WAN capability
- SonicExpress App onboarding
- Zero-Touch Deployment
- Single-pane-of-glass-management through cloud or firewall
- SonicWall Switch, SonicWave Access Point and Capture Client integration
- Built-in and expandable storage
- Redundant power
- High port density
- Cellular failover
- SonicOS 7.0
- TLS 1.3 support
- Groundbreaking performance
- High connection count
- Fast DPI performance
- Low TCO



TZ Series (Gen 7) Spec Preview. [View full specs »](#)

Max Threat Prevention Throughput

2.5 Gbps

Max Connections

1.5 Million

Ports

8x1GbE,
2x2.5/5/10GbE

Find the right SonicWall solution for your business:

sonicwall.com/TZ

DATASHEET

“The TZ570 is easy to onboard, use, and manage, and has an easy wizard and clear menus. I love to use SonicWall products, and really appreciate the support which SonicWall has extended.”

— Gaurav Pandey, Head IT, Delhivery

[Read case study »](#)

The Gen 7 TZ series are highly scalable, with high port density of up to 10 ports. It features both in-built and an expandable storage of up to 256GB, that enables various features including logging, reporting, caching, firmware backup and more. An optional second power supply provides added redundancy in case of failure on select models.

Deployment of Gen 7 TZs are further simplified by Zero-Touch Deployment, with the ability to simultaneously roll out these devices across multiple locations with minimal IT support. Built on next-gen hardware, it integrates firewalling, switching and wireless capabilities, plus provides single-pane-of-glass management for SonicWall Switches and SonicWave Access Points. It allows tight integration with Capture Client for seamless endpoint security.

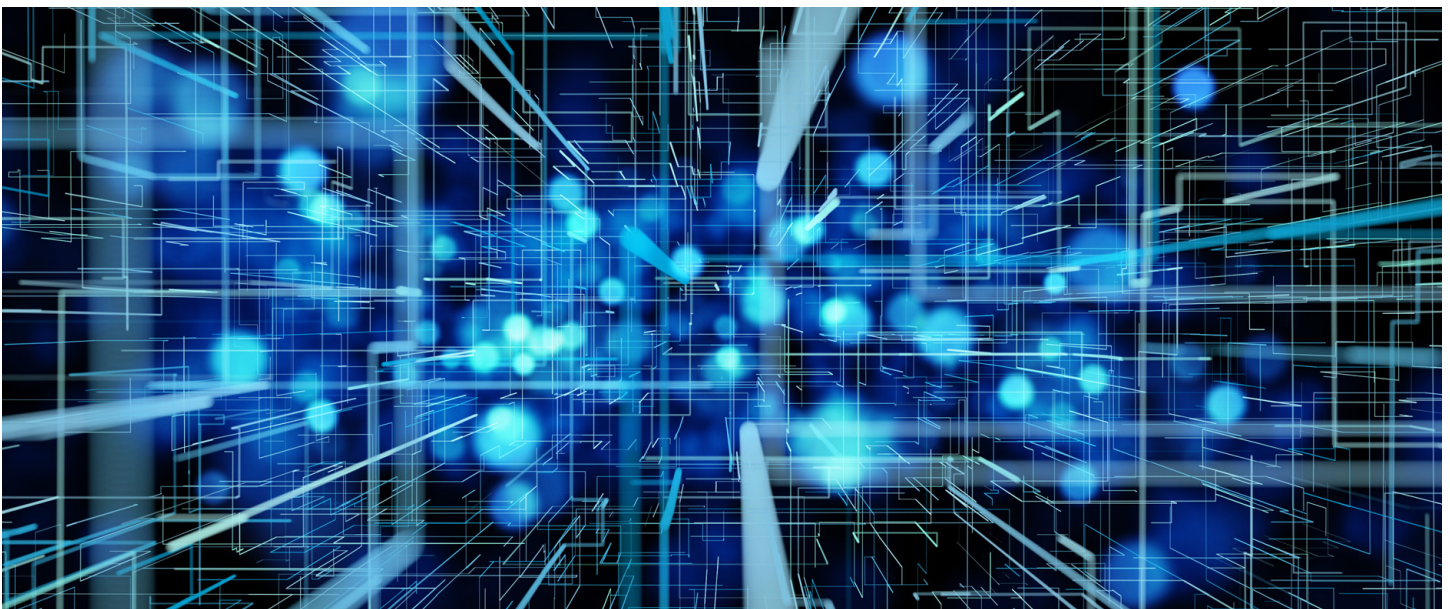
SonicOS and Security Services

The SonicOS architecture is at the core of TZ NGFWs. Gen 7 TZs are powered by the feature rich [SonicOS 7.0](#) operating system with new modern looking UX/UI, advanced security, networking and management capabilities. Gen 7 TZ features

integrated [SD-WAN](#), TLS 1.3 support, real-time visualization, high-speed virtual private networking (VPN) and other robust security features.

Unknown threats are sent to SonicWall’s cloud-based [Capture Advanced Threat Protection \(ATP\)](#) multiengine sandbox for analysis. Enhancing Capture ATP is our patent-pending [Real-Time Deep Memory Inspection \(RTDMI™\)](#) technology. As one of Capture ATP’s engine, RTDMI detects and blocks malware and zero-day threats by inspecting directly in memory.

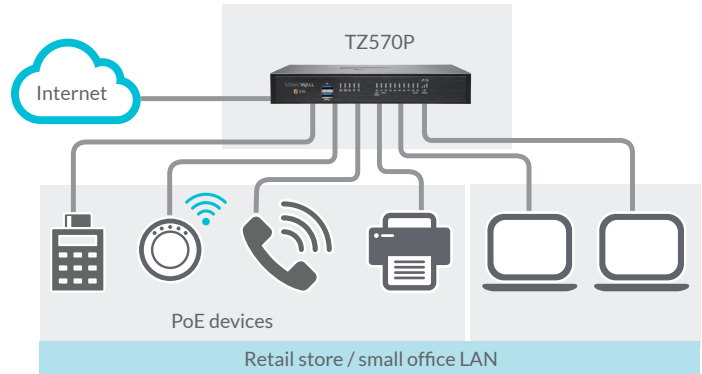
By leveraging Capture ATP with RTDMI technology, in addition to security services such as [Reassembly-Free Deep Packet Inspection \(RFDPI\)](#), Anti-virus and Anti-spyware Protection, intrusion prevention system, Application Intelligence and Control, Content Filtering Services, DPI-SSL, TZ series firewalls stop malware, ransomware and other advanced threats at the gateway. For more information, refer the [SonicOS and Security Services Datasheet](#).



Deployments

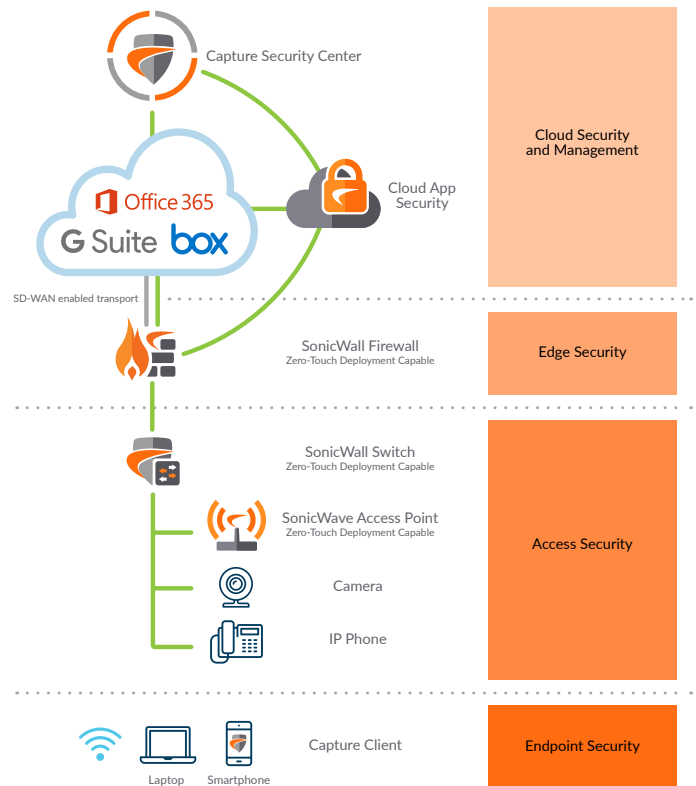
Small to Medium size Business

- Save space and money with an integrated gateway security solution with firewalling, switching and wireless capabilities
- Reduce complexity and get the business running without relying on IT personnel with easy onboarding using SonicExpress App and Zero-Touch Deployment, and easy management through a single pane of glass
- Attain business continuity by providing failover to cellular connectivity
- Protect network from attacks with a comprehensive security solution that incorporates VPN, IPS, CFS, AV and much more
- Leverage high port density to power on multiple PoE devices such as IP phones and IP cameras with TZ570P
- Boost employee productivity by blocking unauthorized access with traffic segmentation and access policies



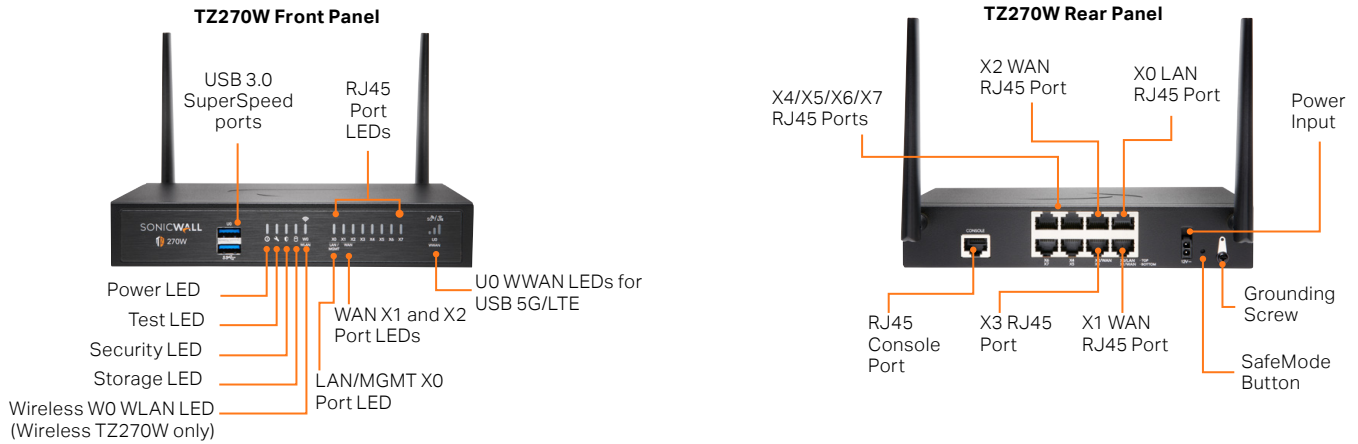
Distributed Enterprise with SD-Branches

- Enhance customer experience and adapt to the changing business needs by enabling next-gen branch connectivity with SD-Branch
- Drive business growth by investing in next-gen appliances with multi-gigabit and advanced security features, to future-proof against the changing network and security landscape
- Secure networks from the most advanced attacks with advanced security features and automatically block threats on decrypted traffic using protocols such as TLS 1.3
- Leverage end-to-end network security with seamless integration of SonicWave access points, SonicWall Switches and Capture Client
- Ensure seamless communication as stores talk to HQ via easy VPN connectivity which allows IT administrators to create a hub and spoke configuration for the safe transport of data between all locations
- Improve business efficiency, performance and reduce costs by leveraging Gen 7 TZ's hardware and software enhancements, plus features such as SD-WAN technology
- Scale quickly and effortlessly with SonicExpress App and Zero-Touch Deployment
- Ensure business continuity by providing failover to cellular connectivity
- Maintain compliance with security features, and leverage built-in and expandable storage to store logs for audit purposes



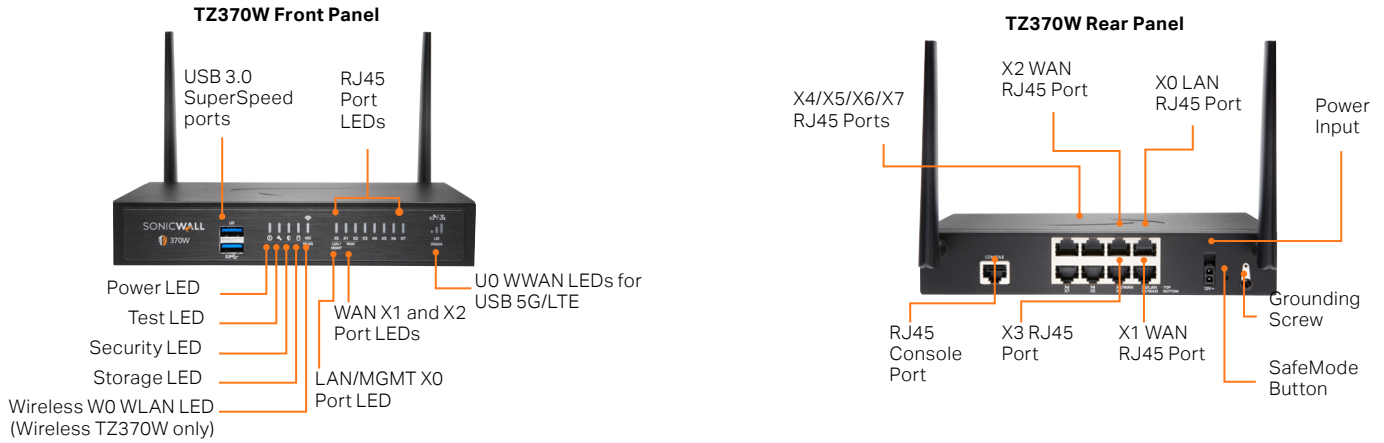
SonicWall TZ270 series

Designed for home offices and lean branches, the TZ270 series deliver industry-validated security effectiveness with best-in-class price-performance.



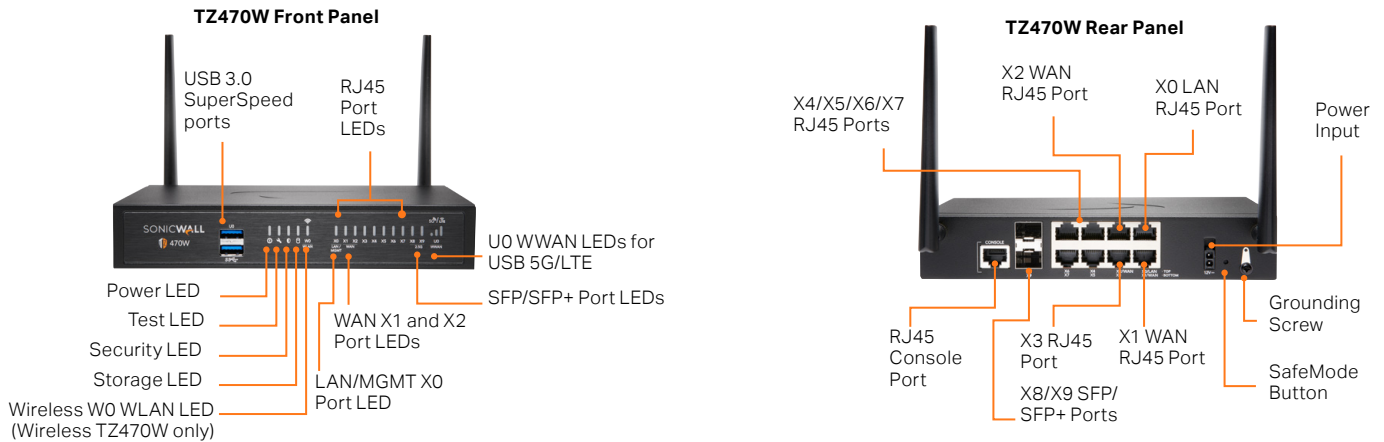
SonicWall TZ370 series

Designed for small organizations and lean branches, the TZ370 series deliver industry-validated security effectiveness with best-in-class price-performance.



SonicWall TZ470 series

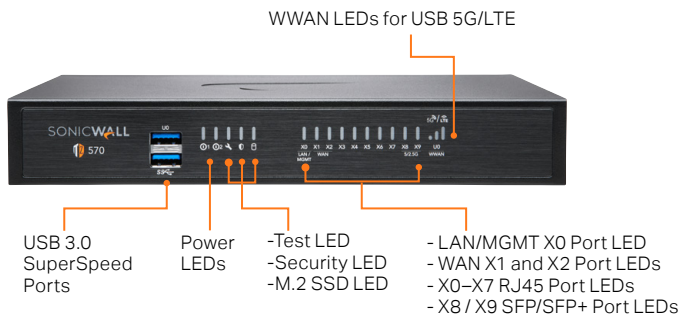
Designed for small organizations and distributed enterprise with SD-Branch locations, the TZ470 series deliver industry-validated security effectiveness with best-in-class price-performance.



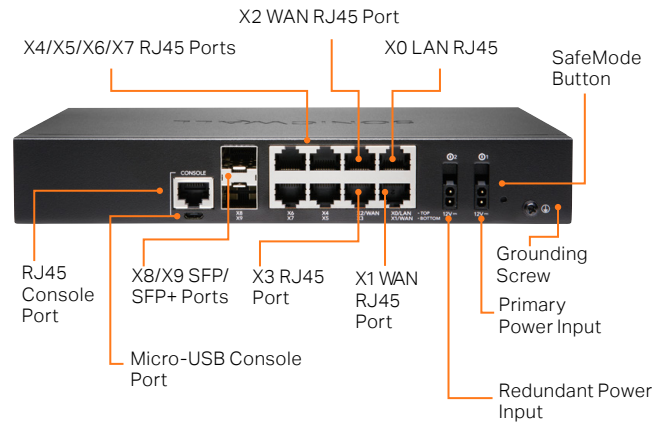
SonicWall TZ570 series

Designed for small to mid-sized organizations and distributed enterprise with SD-Branch locations, the TZ570 series deliver industry-validated security effectiveness with best-in-class price-performance.

TZ570W Front Panel



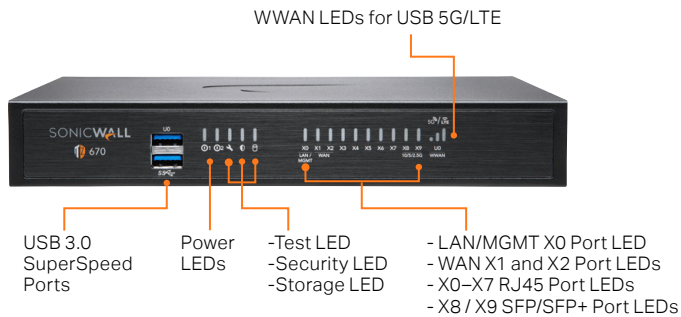
TZ570W Rear Panel



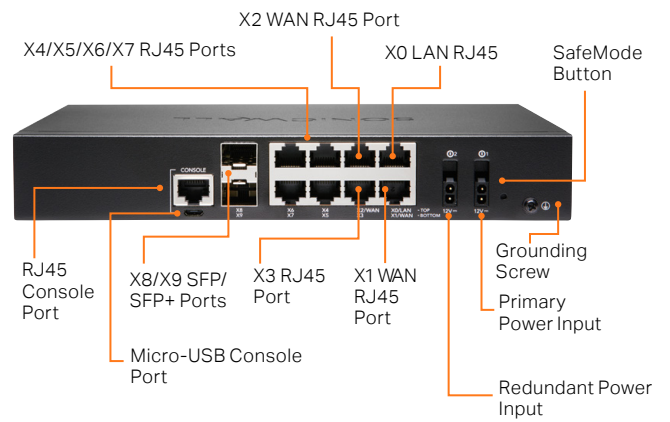
SonicWall TZ670 series

Designed for mid-sized organizations and distributed enterprise with SD-Branch locations, the TZ670 delivers industry-validated security effectiveness with best-in-class price-performance.

TZ670W Front Panel



TZ670W Rear Panel



SonicWall TZ Series (Gen 7) Specifications

Firewall General	TZ270 SERIES	TZ370 SERIES	TZ470 SERIES	TZ570 SERIES	TZ670 SERIES
Operating system	SonicOS 7.0				
Interfaces	8x1GbE, 2 USB 3.0, 1 Console	8x1GbE, 2 USB 3.0, 1 Console	8x1GbE, 2x2.5GbE, 2 USB 3.0, 1 Console	8x1GbE, 2x5GbE, 2 USB 3.0, 1 Console	8x1GbE, 2x10GbE, 2 USB 3.0, 1 Console
Wireless support	2x2 802.11ac Wave 2 (TZ270W)	2x2 802.11ac Wave 2 (TZ370W)	2x2 802.11ac Wave 2 (TZ470W)	2x2 802.11ac Wave 2 (TZ570W)	N/A
Power over Ethernet (PoE) support	N/A	N/A	N/A	5 PoE or 3PoE+ (TZ570P)	N/A
Storage expansion slot (Bottom)	Optional up to 256GB				Optional up to 256GB, 32GB included
Management	Network Security Manager, CLI, SSH, Web UI, GMS, REST APIs				
Redundant power supply	N/A	N/A	N/A	Yes	Yes
Single Sign-On (SSO) Users	1,000	1,000	2,500	2,500	2,500
VLAN interfaces	64	128	128	256	256
Access points supported (maximum)	16	16	32	32	32
Firewall/VPN Performance	TZ270 SERIES	TZ370 SERIES	TZ470 SERIES	TZ570 SERIES	TZ670 SERIES
Firewall inspection throughput ¹	2 Gbps	3 Gbps	3.5 Gbps	4 Gbps	5 Gbps
Threat prevention throughput ²	750 Mbps	1 Gbps	1.5 Gbps	2 Gbps	2.5 Gbps
Application inspection throughput ²	1 Gbps	1.5 Gbps	2 Gbps	2.5 Gbps	3 Gbps
IPS throughput ²	1 Gbps	1.5 Gbps	2 Gbps	2.5 Gbps	3 Gbps
Anti-malware inspection throughput ²	750 Mbps	1 Gbps	1.5 Gbps	2 Gbps	2.5 Gbps
TLS/SSL inspection and decryption throughput (DPI SSL) ²	300 Mbps	500 Mbps	600 Mbps	750 Mbps	800 Mbps
IPSec VPN throughput ³	750 Mbps	1.38 Gbps	1.5 Gbps	1.8 Gbps	2.1 Gbps
Connections per second	6,000	9,000	12,000	16,000	25,000
Maximum connections (SPI)	750,000	900,000	1,000,000	1,250,000	1,500,000
Maximum connections (DPI)	150,000	200,000	250,000	400,000	500,000
Maximum connections (DPI SSL)	25,000	30,000	35,000	50,000	75,000
VPN	TZ270 SERIES	TZ370 SERIES	TZ470 SERIES	TZ570 SERIES	TZ670 SERIES
Site-to-site VPN tunnels	50	100	150	200	250
IPSec VPN clients (maximum)	5 (200)	5 (200)	5 (200)	10 (500)	10 (500)
SSL VPN licenses (maximum)	1 (50)	2 (100)	2 (150)	2 (200)	2 (250)
Encryption/authentication	DES, 3DES, AES (128, 192, 256-bit)/MD5, SHA-1, Suite B Cryptography				
Key exchange	Diffie Hellman Groups 1, 2, 5, 14v				
Route-based VPN	RIP, OSPF, BGP				
Certificate support	Verisign, Thawte, Cybertrust, RSA Keon, Entrust and Microsoft CA for SonicWall-to- SonicWall VPN, SCEP				
VPN features	Dead Peer Detection, DHCP Over VPN, IPSec NAT Traversal, Redundant VPN Gateway, Route-based VPN				
Global VPN client platforms supported	Microsoft® Windows 10				
NetExtender	Microsoft® Windows 10, Linux				
Mobile Connect	Apple® iOS, Mac OS X, Google® Android™, Kindle Fire, Chrome OS, Windows 10				
Security Services	TZ270 SERIES	TZ370 SERIES	TZ470 SERIES	TZ570 SERIES	TZ670 SERIES
Deep Packet Inspection services	Gateway Anti-Virus, Anti-Spyware, Intrusion Prevention, DPI SSL				
Content Filtering Service (CFS)	HTTP URL, HTTPS IP, keyword and content scanning, Comprehensive filtering based on file types such as ActiveX, Java, Cookies for privacy, allow/forbid lists				
Comprehensive Anti-Spam Service	Yes				
Application Visualization	Yes				
Application Control	Yes				
Capture Advanced Threat Protection	Yes				
Networking	TZ270 SERIES	TZ370 SERIES	TZ470 SERIES	TZ570 SERIES	TZ670 SERIES
IP address assignment	Static (DHCP, PPPoE, L2TP and PPTP client), Internal DHCP server, DHCP relay				
NAT modes	1:1, 1:many, many:1, many:many, flexible NAT (overlapping IPs), PAT, transparent mode				
Routing protocols	BGP, OSPF, RIPv1/v2, static routes, policy-based routing				
QoS	Bandwidth priority, max bandwidth, guaranteed bandwidth, DSCP marking, 802.1e (WMM)				
Authentication	LDAP (multiple domains), XAUTH/RADIUS, SSO, Novell, internal user database, Terminal Services, Citrix, Common Access Card (CAC)				

Networking	TZ270 SERIES	TZ370 SERIES	TZ470 SERIES	TZ570 SERIES	TZ670 SERIES
Local user database	150	250	250	250	250
VoIP	Full H323-v1-5, SIP				
Standards	TCP/IP, UDP, ICMP, HTTP, HTTPS, IPsec, ISAKMP/IKE, SNMP, DHCP, PPPoE, L2TP, PPTP, RADIUS, IEEE 802.3				
Certifications (pending)	FIPS 140-2 (with Suite B) Level 2, UC APL, IPv6 (Phase 2), ICSA Network Firewall, ICSA Anti-virus, Common Criteria NDPP (Firewall and IPS)				
High availability	Active/Standby with stateful synchronization				
Hardware	TZ270 SERIES	TZ370 SERIES	TZ470 SERIES	TZ570 SERIES	TZ670 SERIES
Form factor	Desktop ⁴				
Power supply	36W external	36W external	36W external	60W external (TZ570/570W), 180W external (TZ570P only)	60W external
Maximum power consumption (W)	16.84 (TZ270), 18.91 (TZ270W)	16.84 (TZ370), 18.91 (TZ370W)	19.95 (TZ470), 21.98 (TZ470W)	13.4 (TZ570), 15.3 (TZ570W), 108.75 (TZ570P)	13.1
Input power	100 - 240 VAC, 50-60 Hz, 3A	100 - 240 VAC, 50-60 Hz, 3A	100 - 240 VAC, 50-60 Hz, 3A	100-240 VAC, 50-60 Hz	100-240 VAC, 50-60 Hz
Total heat dissipation (BTU)	57.42 (TZ270), 64.48 (TZ270W)	57.42 (TZ370), 64.48 (TZ370W)	68.03 (TZ470), 74.95 (TZ470W)	44.7 (TZ570), 52.17 (TZ570W), 370.84 (TZ570P)	55.1
Dimensions	3.5x13.5x19 (cm) 1.8x5.3x7.5 (in)	3.5x13.5x19 (cm) 1.8x5.3x7.5 (in)	3.5x13.5x19 (cm) 1.8x5.3x7.5 (in)	3.5x15x22.5 (cm) 1.38x5.91x8.85 in	3.5x15x22.5 (cm) 1.38x5.91x8.85 in
Weight	0.82 kg / 1.81 lbs (TZ270), 0.85 kg / 1.87 lbs (TZ270W)	0.82 kg / 1.81 lbs (TZ370), 0.85 kg / 1.87 lbs (TZ370W)	0.83 kg / 1.82 lbs (TZ470), 0.87 kg / 1.92 lbs (TZ470W)	0.97 kg / 2.14 lbs (TZ570), 0.99 kg / 2.18 lbs (TZ570W), 1.05 kg / 2.31 lbs (TZ570P)	0.97 kg / 2.14 lbs
WEEE weight	1.18 kg / 2.6 lbs (TZ270), 1.24 kg / 2.73 lbs (TZ270W)	1.18 kg / 2.6 lbs (TZ370), 1.24 kg / 2.73 lbs (TZ370W)	1.24 kg / 2.73 lbs (TZ470), 1.27 kg / 2.8 lbs (TZ470W)	1.42 kg / 3.13 lbs (TZ570), 1.47 kg / 3.24 lbs (TZ570W), 1.57 kg / 3.46 lbs (TZ570P)	1.42 kg / 3.13 lbs
Shipping weight	1.41 kg / 3.11 lbs (TZ270), 1.47 kg / 3.25 lbs (TZ270W)	1.41 kg / 3.11 lbs (TZ370), 1.47 kg / 3.25 lbs (TZ370W)	1.43 kg / 3.15 lbs (TZ470), 1.51 kg / 3.33 lbs (TZ470W)	1.93 kg / 4.25 lbs (TZ570), 1.98 kg / 4.36 lbs (TZ570W), 2.08 kg / 4.58 lbs (TZ570P)	1.93 kg / 4.25 lbs
MTBF @25°C in years	51.1 (TZ270), 27.1 (TZ270W)	51.1 (TZ370), 27.1 (TZ370W)	46 (TZ470), 24.1 (TZ470W)	26.1 (TZ570), 23.3 (TZ570W), 31.7 (TZ570P)	43.9
Environment (Operating/Storage)	32°-105° F (0°-40° C)/-40° to 158° F (-40° to 70° C)				
Humidity	5-95% non-condensing				
Regulatory	TZ270 SERIES	TZ370 SERIES	TZ470 SERIES	TZ570 SERIES	TZ670 SERIES
Major regulatory compliance (wired models)	FCC Class B, ICES Class B, CE (EMC, LVD, RoHS), C-Tick, VCCI Class B, UL, cUL, TUV/GS, CB, Mexico CoC by UL, WEEE, REACH, BSMI, KCC/MSIP, ANATEL	FCC Class B, ICES Class B, CE (EMC, LVD, RoHS), C-Tick, VCCI Class B, UL, cUL, TUV/GS, CB, Mexico CoC by UL, WEEE, REACH, BSMI, KCC MSIP, ANATEL	FCC Class B, ICES Class B, CE (EMC, LVD, RoHS), C-Tick, VCCI Class B, UL, cUL, TUV/GS, CB, Mexico CoC by UL, WEEE, REACH, BSMI, KCC/MSIP, ANATEL	FCC Class B, FCC, ICES Class B, CE (EMC, LVD, RoHS), C-Tick, VCCI Class B, UL/cUL, TUV GS, CB, Mexico DGN notice by UL, WEEE, REACH, BSMI, KCC/MSIP, ANATEL	FCC Class B, FCC, ICES Class B, CE (EMC, LVD, RoHS), C-Tick, VCCI Class B, UL/cUL, TUV/GS, CB, Mexico DGN notice by UL, WEEE, REACH, BSMI, KCC/MSIP, ANATEL
Major regulatory compliance (wireless models)	FCC Class B, FCC RF ICES Class B, IC RF CE (R&TTE, EMC, LVD, RoHS), RCM, VCCI Class B, MIC/TELEC, UL, cUL, TUV/GS, CB, Mexico CoC by UL, WEEE, REACH, ANATEL	FCC Class B, FCC RF ICES Class B, IC RF CE (R&TTE, EMC, LVD, RoHS), RCM, VCCI Class B, MIC/TELEC, UL, cUL, TUV/GS, CB, Mexico CoC by UL, WEEE, REACH, ANATEL	FCC Class B, FCC RF ICES Class B, IC RF CE (R&TTE, EMC, LVD, RoHS), RCM, VCCI Class B, MIC/TELEC, UL, cUL, TUV/GS, CB, Mexico CoC by UL, WEEE, REACH, ANATEL	FCC Class B, FCC P15C, FCC P15E, ICES Class B, ISED/IC, CE (RED, RoHS), C-Tick, VCCI Class B, Japan Wireless, UL/cUL, TUV GS, CB, Mexico DGN notice by UL, WEEE, REACH, BSMI, NCC (TW) KCC/MSIP, SRRC, ANATEL	N/A

Regulatory	TZ270 SERIES	TZ370 SERIES	TZ470 SERIES	TZ570 SERIES	TZ670 SERIES
Major regulatory compliance (PoE models)	N/A	N/A	N/A	FCC Class A, ICES Class A, CE (EMC, LVD, RoHS), C-Tick, VCCI Class A, UL/cUL, TUV/ GS, CB, Mexico DGN notice by UL, WEEE, REACH, BSMI, KCC/MSIP, ANATEL	N/A

Integrated Wireless⁵ (TZ270W/370W/470W/570W ONLY)

Standards	802.11a/b/g/n/ac Wave 2, WEP, WPA, WPA2, 802.11i, TKIP, PSK, 02.1x, EAP-PEAP, EAP-TTLS				
Frequency bands	802.11a: 5.180-5.825 GHz; 802.11b/g: 2.412-2.472 GHz; 802.11n: 2.412-2.472 GHz, 5.180-5.825 GHz; 802.11ac: 5.180-5.825 GHz				
Operating channels	802.11a: US and Canada 12, Europe 11, Japan 4, Singapore 4, Taiwan 4; 802.11b/g: US and Canada 1-11, Europe 1-13, Japan (14-802.11b only); 802.11n (2.4 GHz): US and Canada 1-11, Europe 1-13, Japan 1-13; 802.11n (5 GHz): US and Canada 36-48/149-165, Europe 36-48, Japan 36-48, Spain 36-48/52-64; 802.11ac: US and Canada 36-48/149-165, Europe 36-48, Japan 36-48, Spain 36-48/52-64				
Transmit output power	Based on the regulatory domain specified by the system administrator				
Transmit power control	Yes				
Data rates supported	802.11a: 6, 9, 12, 18, 24, 36, 48, 54 Mbps per channel; 802.11b: 1, 2, 5.5, 11 Mbps per channel; 802.11g: 6, 9, 12, 18, 24, 36, 48, 54 Mbps per channel; 802.11n: 7.2, 14.4, 21.7, 28.9, 43.3, 57.8, 65, 72.2, 15, 30, 45, 60, 90, 120, 135, 150 Mbps per channel; 802.11ac: 7.2, 14.4, 21.7, 28.9, 43.3, 57.8, 65, 72.2, 86.7, 96.3, 15, 30, 45, 60, 90, 120, 135, 150, 180, 200, 32.5, 65, 97.5, 130, 195, 260, 292.5, 325, 390, 433.3, 65, 130, 195, 260, 390, 520, 585, 650, 780, 866.7 Mbps per channel				
Modulation technology spectrum	802.11a: Orthogonal Frequency Division Multiplexing (OFDM); 802.11b: Direct Sequence Spread Spectrum (DSSS); 802.11g: Orthogonal Frequency Division Multiplexing (OFDM)/Direct Sequence Spread Spectrum (DSSS); 802.11n: Orthogonal Frequency Division Multiplexing (OFDM); 802.11ac: Orthogonal Frequency Division Multiplexing (OFDM)				

1. Testing Methodologies: Maximum performance based on RFC 2544 (for firewall). Actual performance may vary depending on network conditions and activated services.
2. Threat Prevention/GatewayAV/Anti-Spyware/IPS throughput measured using industry standard Keysight HTTP performance test tools. Testing done with multiple flows through multiple port pairs. Threat Prevention throughput measured with Gateway AV, Anti-Spyware, IPS and Application Control enabled with default firewall settings.
3. VPN throughput measured with UDP traffic using 1418 byte packet size AESGMAC16-256 Encryption adhering to RFC 2544. All specifications, features and availability are subject to change.
4. For rack mount, separate rack mount kit available.
5. All TZ integrated wireless models can support either 2.4GHz or 5GHz band. For dual-band support, please use SonicWall's wireless access point products.

Regulatory Model Numbers

TZ270/270W	APL57-100/APL57-101
TZ370/370W	APL57-100/APL57-101
TZ470/470W	APL57-0F1/APL57-0F2
TZ570/TZ570W/TZ570P	APL62-0F7/APL62-0F8/APL63-0F9
TZ670	APL62-0F7

PARTNER ENABLED SERVICES

Need help to plan, deploy or optimize your SonicWall solution? SonicWall Advanced Services Partners are trained to provide you with world class professional services. Learn more at:

www.sonicwall.com/PES

SonicOS 7.0 Feature Summary

Firewall

- Stateful packet inspection
- Reassembly-Free Deep Packet Inspection
- DDoS attack protection (UDP/ICMP/SYN flood)
- IPv4/IPv6 support
- Biometric authentication for remote access
- DNS proxy
- Full API support
- SonicWall Switch integration
- SD-WAN scalability
- SD-WAN Usability Wizard¹
- SonicCoreX and SonicOS containerization¹
- Connections scalability (SPI, DPI, DPI SSL)

Enhanced dashboard¹

- Enhanced device view
- Top traffic and user summary
- Insights to threats
- Notification center

TLS/SSL/SSH decryption and inspection

- TLS 1.3 with enhanced security¹
- Deep packet inspection for TLS/SSL/SSH
- Inclusion/exclusion of objects, groups or hostnames
- SSL control
- Enhancements for DPI-SSL with CFS
- Granular DPI SSL controls per zone or rule

Capture advanced threat protection²

- Real-Time Deep Memory Inspection
- Cloud-based multi-engine analysis
- Virtualized sandboxing
- Hypervisor level analysis
- Full system emulation
- Broad file type examination
- Automated and manual submission
- Real-time threat intelligence updates
- Block until verdict
- Capture Client

Intrusion prevention²

- Signature-based scanning

- Automatic signature updates
- Bi-directional inspection
- Granular IPS rule capability
- GeolIP enforcement
- Botnet filtering with dynamic list
- Regular expression matching

Anti-malware²

- Stream-based malware scanning
- Gateway anti-virus
- Gateway anti-spyware
- Bi-directional inspection
- No file size limitation
- Cloud malware database

Application identification²

- Application control
- Application bandwidth management
- Custom application signature creation
- Data leakage prevention
- Application reporting over NetFlow/IPFIX
- Comprehensive application signature database

Traffic visualization and analytics

- User activity
- Application/bandwidth/threat usage
- Cloud-based analytics

HTTP/HTTPS Web content filtering²

- URL filtering
- Proxy avoidance
- Keyword blocking
- Policy-based filtering (exclusion/inclusion)
- HTTP header insertion
- Bandwidth manage CFS rating categories
- Unified policy model with app control
- Content Filtering Client

VPN

- Secure SD-WAN
- Auto-provision VPN
- IPSec VPN for site-to-site connectivity
- SSL VPN and IPSec client remote access
- Redundant VPN gateway

- Mobile Connect for iOS, Mac OS X, Windows, Chrome, Android and Kindle Fire
- Route-based VPN (OSPF, RIP, BGP)

Networking

- PortShield
- Path MTU discovery
- Enhanced logging
- VLAN trunking
- Port mirroring (NSa 2650 and above)
- Layer-2 QoS
- Port security
- Dynamic routing (RIP/OSPF/BGP)
- SonicWall wireless controller
- Policy-based routing (ToS/metric and ECMP)
- NAT
- DHCP server
- Bandwidth management
- A/P high availability with state sync
- Inbound/outbound load balancing
- High availability - Active/Standby with state sync
- L2 bridge, wire/virtual wire mode, tap mode, NAT mode
- Asymmetric routing
- Common Access Card (CAC) support

VoIP

- Granular QoS control
- Bandwidth management
- DPI for VoIP traffic
- H.323 gatekeeper and SIP proxy support

Management, monitoring and support

- Capture Security Appliance (CSa) support
- Capture Threat Assessment (CTA) v2.0
 - New design or template
 - Industry and global average comparison
- New UI/UX, Intuitive feature layout¹
 - Dashboard
 - Device information, application, threats
 - Topology view
 - Simplified policy creation and management

- Policy/Objects usage statistics¹
 - Used vs Un-used
 - Active vs Inactive
- Global search for static data
- Storage support¹
- Internal and external storage management¹
- WWAN USB card support (5G/LTE/4G/3G)
- Network Security Manager (NSM) support
- Web GUI
- Command line interface (CLI)
- Zero-Touch registration & provisioning
- CSC Simple Reporting¹
- SonicExpress mobile app support
- SNMPv2/v3
- Centralized management and reporting with SonicWall Global Management System (GMS)²
- Logging
- Netflow/IPFix exporting
- Cloud-based configuration backup
- BlueCoat security analytics platform
- Application and bandwidth visualization
- IPv4 and IPv6 management
- CD management screen
- Dell N-Series and X-Series switch management including cascaded switches
- Topology view
- Band steering
- Beamforming
- AirTime fairness
- Bluetooth Low Energy
- MiFi extender
- RF enhancements and improvements
- Guest cyclic quota

Debugging and diagnostics

- Enhanced packet monitoring
- SSH terminal on UI

Wireless

- SonicWave AP cloud management
- WIDS/WIPS
- Rogue AP prevention
- Fast roaming (802.11k/r/v)
- 802.11s mesh networking
- Auto-channel selection
- RF spectrum analysis
- Floor plan view

Integrated Wireless (TZ270/370/470/570W only)

- 802.11ac Wave 2 wireless
- Dual-band (2.4 GHz and 5.0 GHz)
- 802.11 a/b/g/n/ac wireless standards
- Wireless intrusion detection and prevention
- Wireless guest services
- Lightweight hotspot messaging
- Virtual access point segmentation
- Captive portal
- Cloud ACL

¹ New feature, available on SonicOS 7.0

² Requires added subscription

Learn more about SonicWall Gen 7 TZ Series

www.sonicwall.com/TZ

About SonicWall

SonicWall delivers Boundless Cybersecurity for the hyper-distributed era and a work reality where everyone is remote, mobile and unsecure. By knowing the unknown, providing real-time visibility and enabling breakthrough economics, SonicWall closes the cybersecurity business gap for enterprises, governments and SMBs worldwide. For more information, visit www.sonicwall.com or follow us on [Twitter](#), [LinkedIn](#), [Facebook](#) and [Instagram](#).



SonicWall, Inc.

1033 McCarthy Boulevard | Milpitas, CA 95035

Refer to our website for additional information.

www.sonicwall.com

SONICWALL®

© 2021 SonicWall Inc. ALL RIGHTS RESERVED.

SonicWall is a trademark or registered trademark of SonicWall Inc. and/or its affiliates in the U.S.A. and/or other countries. All other trademarks and registered trademarks are property of their respective owners. The information in this document is provided in connection with SonicWall Inc. and/or its affiliates' products. No license, express or implied, by estoppel or otherwise, to any intellectual property right is granted by this document or in connection with the sale of SonicWall products. EXCEPT AS SET FORTH IN THE TERMS AND CONDITIONS AS SPECIFIED IN THE LICENSE AGREEMENT FOR THIS PRODUCT, SONICWALL AND/OR ITS AFFILIATES ASSUME NO LIABILITY WHATSOEVER AND DISCLAIMS ANY EXPRESS, IMPLIED OR STATUTORY WARRANTY RELATING TO ITS PRODUCTS INCLUDING, BUT NOT LIMITED TO, THE IMPLIED WARRANTY OF MERCHANTABILITY, FITNESS FOR A PARTICULAR PURPOSE, OR NON-INFRINGEMENT. IN NO EVENT SHALL SONICWALL AND/OR ITS AFFILIATES BE LIABLE FOR ANY DIRECT, INDIRECT, CONSEQUENTIAL, PUNITIVE, SPECIAL OR INCIDENTAL DAMAGES (INCLUDING, WITHOUT LIMITATION, DAMAGES FOR LOSS OF PROFITS, BUSINESS INTERRUPTION OR LOSS OF INFORMATION) ARISING OUT OF THE USE OR INABILITY TO USE THIS DOCUMENT, EVEN IF SONICWALL AND/OR ITS AFFILIATES HAVE BEEN ADVISED OF THE POSSIBILITY OF SUCH DAMAGES. SonicWall and/or its affiliates make no representations or warranties with respect to the accuracy or completeness of the contents of this document and reserves the right to make changes to specifications and product descriptions at any time without notice. SonicWall Inc. and/or its affiliates do not make any commitment to update the information contained in this document.